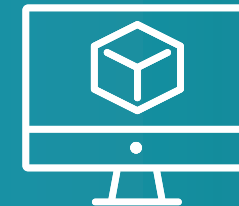
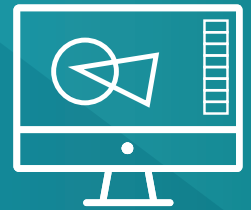
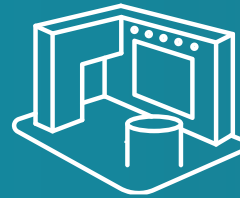




S2 + YOU  
The winning formula



# What is an S2+You stand package?

## It's modular

The S2+You stand package lets you choose between building a stand with customised pre-fabricated, reusable options and fully modular aluminium frame stands, that can be built quickly but still give you an individual design.

## It's bespoke

Your choice of graphics and colour options can be added to each element of your stand, to showcase your brand and give you the impact you need to stand out from the crowd at every event.

## It's cost-effective

We know that a custom design is a real investment, but we also know that most shell schemes won't give you the 'wow factor' you're looking for. Now there's another way: a bespoke modular package that comes at an affordable square metre rate.

## It's sustainable

All S2+You stands are pre-fabricated using FSC sourced timber stock panels that can be wrapped in sustainably sourced fabric graphics. And for an even more environmentally sound option, there's our aluminium frame option. All come in easy to install, streamlined designs that keep your waste levels down and your green credentials up.

## It's safe

We uphold Covid-secure standards in everything we do. Our new easy to install S2+You packages also reduce build time, keeping 'time on site' down and helping to ensure the safety of everyone involved in creating your event.

## All by someone you can trust

We are an award winning design and build contractor. We work with you to create a stand-out solution that's right for your business and your budget.

ESSA | Event Supplier and Services Association



created by



solutions2  
Exhibitions & Events

# Pre-fabricated Custom Build Package

These modular stand packages utilise our re-usable stock panels to give a premium, custom-build-quality finish without the cost or time implications to exhibitors. We have a range of options and additions which can be pre-defined or added by the exhibitor to reflect the individual identity of a brand or event.



- HIGH QUALITY PREMIUM FINISH
- PRE-FABRICATED DESIGN
- FULLY CUSTOMISABLE
- 'TURN-KEY' STAND PACKAGE
- HAND SANITISERS AND SIGNAGE INCLUDED

All our packages can be customised with optional extras to create a unique stand solution.

created by 

# Why is this COVID friendly?

The All Secure Standard, set out by the Association of Event Organisers (AEO), Association of Event Venues (AEV), Events Supplier and Services Association (ESSA) and its stakeholders, provides a framework of support to ensure a safer return to live events.

**All work has been approved by UK government.**

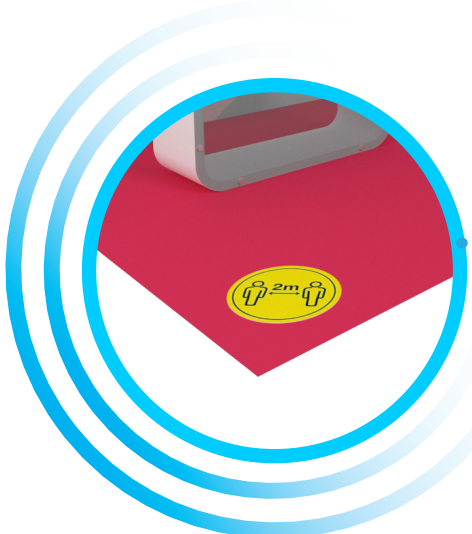
The guidance sets out to achieve common standards of health, safety and operational planning, management and on-site conduct for the events industry.



Hired Counter with COVID Screen



COVID safety signage with hand sanitisers



Floor Social Distancing signage



COVID screens to table & chairs

# Alternative Aluminium Frame & Infill option

Whilst most shell scheme stands or 'system' packages won't give your exhibitors the 'wow' factor, our aluminium frame packages really deliver! Using a choice of layouts, colours and graphic options it's easy for exhibitors to showcase their brand and create a great impact.



- SUSTAINABLE FRAME & GRAPHIC OPTIONS
- 'TURN-KEY' STAND PACKAGE
- HAND SANITISERS AND SIGNAGE INCLUDED

created by 

 solutions2  
Exhibitions & Events

# Get in touch

Talk to us about your  
next event

If you need help with your event, you've come  
to the right place.

For further information or to arrange a meeting  
please get in touch.

**0121 351 1100**

**hello@solutions2uk.co.uk**

**www.solutions2uk.co.uk**

